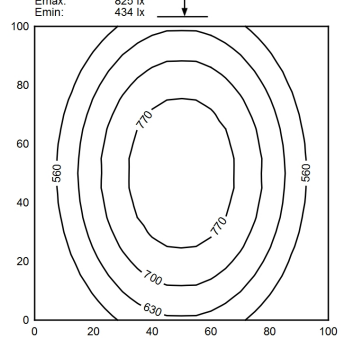
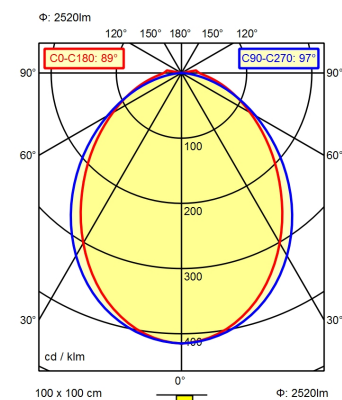


M12-A-5



- light source
- work equipment
- connected load
- power consumption
- luminous flux
- luminous efficiency
- light type/-color
- colour temperatur
- color rendering index
- light distribution
- beam angle
- chromaticity tolerance LED
- glare control
- system of protection
- class of protection
- technology
- operation
- housing
- cover
- weight (net)
- mains lead
- design
- fastening
- dimension
- decorative contrast side parts
- special features

- LED
- without
- 22-26 V, DC
- env. 20 W
- approx. 2.520 lm
- approx. 126 lm/W
- cold white
- approx. 5.000 K
- CRI > 80
- direct
- 89° / 97°
- < 4 SDCM
- screen
- IP 54
- III
- multi-stage switchable; no notice
- external
- aluminium/plastic; anodised, painted; aluminium coloured anodised
- Acrylic (PMMA); satine
- ca. 0,507; KG
- built-in plug; M12-A-5
- mounted version
- bracket
- A=1175mm, C=1130mm, C1=1160mm
- natural silver anodised
- ADVANCED package